



## Stanley Park Achiever

September 2010

# Welcome Back

A warm welcome to the start of the new academic year. It is going to be an extremely busy year, not least because we will have a considerable amount of preparation for the new school in addition to 'doing the day job'.

You will have no doubt read that the building work on our new school is proceeding well and that our site has become of significant national interest. Ancient remains believed to be up to 3,000 years old have been discovered including Early Iron Age settlements and Roman burials of infants and animals. Among the findings are Romano-British enclosures and pits containing sheep, pigs, horses, goats and dogs as well as Iron Age features such as a possible droveway.



Experts said the findings have led them to believe that the area was once a small farming community with typical earth and timber roundhouses with thatched roofs.

Duncan Hawkins, lead archaeological consultant, said "*The excavations are certainly the most important ever undertaken in Sutton and very important in the context of Greater London where much of the other evidence of these periods has been destroyed*".

## **Building Schools for the Future Consultation**

In preparation for the new school we are giving consideration to a number of changes.

### **Vertical Tutoring**

The first of these concerns a move to towards Vertical Tutoring for some of our year groups. Last year Ms Murrin and several staff visited a school that has adopted such tutoring. This and further research has led us to the conclusion that it might be something that we wish to adopt in our new school because it fits well with our philosophy and values.

The proposal is to maintain the current Tutoring arrangements in years 7 and 8 whereby the Tutor also acts as the teacher for the Excellent Futures Curriculum. Our evidence suggests that this arrangement has been extremely successful and parents have been very happy with the structured support that this provides during the critical transitional years after Primary School.

It is from year 9 onwards that we are proposing a significant change. Rather than entering a Tutor Group with fellow students of the same age we are proposing placing them in a Tutor Group with students in different year groups. Typically this would mean that each Tutor Group would have approximately 4/5 students from each of the years 9, 10, 11, 12 and 13.

### **Uniform**

We are also considering a change in uniform, something I know that a significant majority of our students wish to change and be involved in the design of. At present we have an open mind about the nature of the changes but we can confirm that the school badge will be changing. This change, in consultation with groups of students, was selected to represent the values, principles and experiences of the Stanley Park High School Community.



As there is a possibility of a change of uniform I politely request that you avoid purchasing new uniform unless it is completely necessary. Students will be expected to be in full school uniform at all times but try and ask your son/daughter to look after it, or not grow, before next August. If we decide to change the uniform it will be from next September.

### **Timings of the School Day**

We are also giving consideration to possible changes to the timings of the school day, both in terms of the envelope of the day and the length of lessons.

### **Consultation**

In advance of this we would like to know what you as parents think of all the above proposals. To help you form an opinion of these issues we will be placing a considerable amount of material on our web site from 1<sup>st</sup> November 2010. We will also be holding an informal consultation for parents on our Preparation for Learning Day on 8<sup>th</sup> November 2010. Further

---

### **Our monthly Achiever is changing**

With each area of the school contributing their own page, the new bigger Achiever will be distributed at the end of each alternate month. Please email the school on [officesphs@suttonlea.org](mailto:officesphs@suttonlea.org) with any comments or suggestions you might have on the new format.

---

### **Open Evening**

Our Open Evening will take place on Tuesday 5th October between 6pm and 9pm. In order for staff and students to prepare, the school will close at 12:10pm. Please note that the school is closed for Staff Inset on Wednesday 6th October. School will reopen at the normal time on Thursday 7th October.

---

### **Absence Line**

Absence through illness must be reported to the School Office by telephoning the dedicated absence line on the **first** day. The absence line number is **0208 254 7804**. A written explanation is still required on return to school.

If your child has to be absent or late to school for any medical reason such as appointments, the school must be informed in writing.

Thank you for your co-operation

# Health and Work

## Autumn on the Allotment



Year 9 students recently harvested a bumper crop of carrots and beetroot at the allotment. Other crops grown this year include cabbage, lettuce, beans, potatoes, tomatoes and chillies.

### The Football season has begun...

With the excellently attended Year 7 Football trials concluded, Mr Griffith took a squad of players to the 7 a-side tournament at Wilsons School. The Saturday competition consisted of several schools from both the Sutton and Croydon Boroughs.

The Stanley Park side started slowly with defeats in their first two games, but began to play as a team and reap the rewards. After dominating the game with Cheam, they went on to beat Wilsons and Royal Russell with superb team performances.



The Year 7 Football Squad

The tournament was unusually decided on goals scored and the boys narrowly missed out on qualification to the final. The performances of captain Cameron Steel and the goals from Jordan Joseph and Billy Lander were noticeable individual highlights from the event. The boys have their first full side game against Coombe Boys, then our league games begin with local rivals Overton Grange. Good luck!

### Year 8 Team

With goals the aim of the games, our Year 8 team played with an attacking line-up. The pick of our matches was the 3-2 victory against Wilsons, with Alex Rivers and Liam Banfield performing particularly well. Unfortunately we did not manage to qualify for the semi-finals, but we had enjoyed the experience. We are looking forward to getting our 11-a-side games underway.



### MACMILLAN COFFEE MORNING – OR IN THIS CASE EVENING!!!

We will be holding a 'Coffee Evening' in aid of Macmillan Cancer Support during our Open Evening on Tuesday 5<sup>th</sup> October. We will be located in the Behaviour Support Room. I hope that you will support this worthy cause. Drink and cake for only £1 donation.

**A HUGE THANK YOU IN ADVANCE FOR YOUR SUPPORT.**

# Communication

## Best Ever English Results at GCSE

Stanley Park's Year 11 pupils have put in their best performance in English so far, with 56% getting A\* to C. This is the second year the English department has comfortably exceeded the 50% mark. The figure could rise further with some pupils due to sit a re-take exam in November after narrowly missing a C grade. Thanks to all the staff, tutors and the pupils themselves for their hard work.



## Reading Together

For parents the bookbag is an essential part of their child's primary school kit and reading together with their child becomes part of the evening routine. At Stanley Park High school we want this to continue because reading is the key to success, not only in English but many other subjects.

It widens the vocabulary, gives the reader experiences of a range of sentences structures and a feel for the written word; most importantly it liberates the imagination.

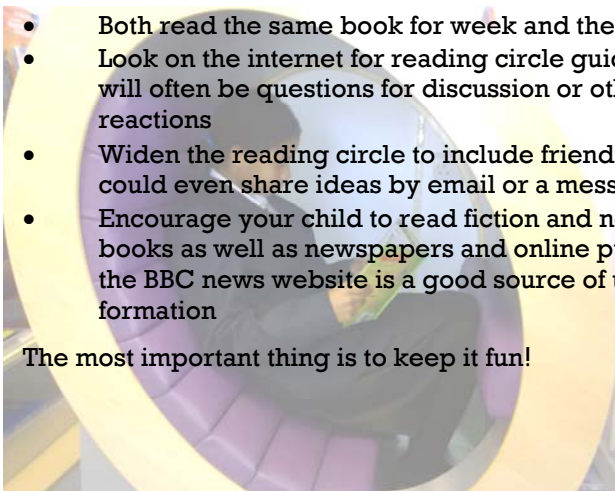
For less confident readers:

- Read with them, taking turns
- Let them see you value reading
- Listen to them read to you – let them look at the passage before they read it so they have a sense of what it means before they begin
- Talk to your child about what they have read
- If they make a mistake, encourage them to look back and try again
- Always be positive
- Where they don't know word use a series of strategies – look at the initial letter, the shape of the word, make an informed guess by thinking what would make sense in the context of the sentence

For more confident readers

- Both read the same book for week and then talk about it
- Look on the internet for reading circle guides – these will often be questions for discussion or other people's reactions
- Widen the reading circle to include friends – they could even share ideas by email or a messaging service
- Encourage your child to read fiction and non fiction books as well as newspapers and online publications – the BBC news website is a good source of up-to-date information

The most important thing is to keep it fun!



## All Change For The New GCSE

Pupils in year 10 are starting a new style English GCSE course. A key difference will be that instead of being allowed to take coursework home to improve it, they will now have to do it in the class room under controlled conditions.

In the new GCSE, coursework, including speaking and listening, accounts for 60% of the marks. Because of this, attendance during the week when the controlled conditions assignments are being done is essential, as they stretch over four lessons and must be supervised by a teacher.

# and Language



## Christmas Visit to Lille

Sign up for the 1 day excursion to the famous Christmas Market in Lille, France. Leaving on Friday 10th December at 6am. Travel is by coach and ferry returning to school at 10pm.

Enjoy the pre-Christmas atmosphere, wandering around the old town, savouring the delights of the different stalls.

This visit is open to all students. See one of the language teachers for a letter with further details

There are 44 places available and the closing date is 22nd October.

## Language Magazines

For all students studying French or Spanish. Why not subscribe to some fun language magazines.

For just £8 you will receive 5 copies throughout the year full of puzzles, crosswords and articles about your favourite celebrities.

Please see your language teacher for a letter asap.

## Being the “new kid”

Starting a new school can be nerve racking for anyone, and it's no different for teachers either. New buildings, new people, new routine, new everything in fact. The kids seem to think they have it tough, but at least most of them have friends coming from the same primary schools. Here I am, expected to be a fountain of knowledge and I'm struggling to find the canteen, how on earth am I going to allay the childrens' fears?



I originally trained as an out and out languages teacher; after all, I've studied languages since the age of seven, had some luck with really great teachers who I got on with and who inspired me to become a linguist and I've lived in France for four years and had some fantastic opportunities as a result of speaking fluent French. Four ski seasons living in the French Alps and skiing or snowboarding every day is not a bad life style! I'd love to see the languages department at Stanley Park blossom. We've got 3 new language teachers joining Mrs Nelson and Mrs Krah this year. We're all passionate about our languages and the opportunities they can present people with and from what I've seen in my first few weeks we have motivated, talented linguists amongst the students.

Here at Stanley Park I've now also got to get to grips with the Excellent Futures Curriculum. Like some parents I was initially a little wary of it, but the more I see of it, the more I am sure it really prepares people for real life and not just a life of academia. It's all about turning school children into well rounded people, allowing them to maximise their own potential and prepare them for the real world. We are constantly reading about rising unemployment, particularly among university leavers, job cuts everywhere and competition for the jobs that are out there. Having watched some of the end of year 8 EFC interviews, I am confident this is not some flash in the pan curriculum, but one that will really give our students an edge in future life. They will be better placed to “sell” themselves in interviews, be more confident and flexible and need far less investment from companies as they will be better prepared for a working life.

Stanley Park High School is the 4<sup>th</sup> school I've worked in, and my first impressions have been very reassuring. The school has a positive feel about it, the relationships and respect between students and teachers are good, the facilities are good if somewhat cramped at the moment, and the outlook is bright. We have a brand new school coming, GCSE results are improving year on year and I believe we're entering a very exciting new era. I think I've been incredibly fortunate to get involved with Stanley Park when I have, and I hope all the new year 7's have, like me, got over their initial fears and started to settle in for a really exciting and successful future.

**Mr W Evans MFL**

# Science



<b>Name:</b>	Mr Owens
<b>Degree:</b>	Marine Biology
<b>Interests:</b>	Football, sport, film, theatre, journalism, creative writing
<b>Fave Film:</b>	Star Wars: Return of the Jedi
<b>Fave Band:</b>	Rage Against the Machine

Welcome to the Science Department! With a new Area Leader of Science, new staff and new courses aplenty there is a lot to get your head around in the new look Science area.

Congratulations are in order for Mrs Ballard on her new position as Area Leader of Science and Miss Crouch as her young padawan (second in command). Shock a Star Wars reference from a member of a Science Department.

There are fresh faces in the department in the form of Mr Owens, Miss Mitchell, Miss Waugh, Mr Lamb and Mr Fiaty.

Miss Irving has taken a new role and is now in charge of Post-16 and Miss Webster is currently running Psychology across the school. Finally Mrs Weston, Mr Amin and Miss Perryman round out the science team.

As well as plenty of staff, science is running plenty of courses. In KS4 one and two year BTEC courses have come into effect, alongside the 21<sup>st</sup> Century OCR scheme of work. New year, new positions, new staff, new schemes of work, same old science.....but still as interesting and fun as ever.

## Things going on in Science this term:

- **BTEC Club – every Wednesday in Room S3**
- **Science Trip for Y9's – remember to bring back your reply slips ASAP, spaces are limited and on a first-come-first served basis.**

**Calling all Year 9's.**

You are invited on an exciting daytrip to the

**science museum**

**Date: 5<sup>th</sup> November**

**Cost: £8**

**and the Natural History Museum.**

Ask Mrs Weston or Miss Waugh in Science for further details.



## Science Club



- Enjoying science?
- Want more?
- Then come along to science club
- Coming Soon.....



# Dept for Autism

A welcome to the DFA.

We are very privileged to have this Base attached to the school and we also look forward to the development of the new school which will incorporate a mild and a moderate base.



Not everyone knows about Autism and I would welcome any enquiries from parents or students who are keen to learn more. Autism is considered a life long disability but sometimes known as an unseen disability and may take the form of difficulties in social communication, social interaction, imagination may be impaired or there may be sensory issues.

We are very proud of our students in the DFA who have achieved so much in the main stream, not only in academic areas but also sporting and involvement in extra-curriculum activities. Students are encouraged to go on school trips and visits both day and residential and are provided with support to enable them to succeed. Some students have become very independent and we are pleased that our numbers going into Post 16 studies are increasing. In fact one of our students has just successfully gained entrance to Sussex University, a fantastic achievement.



Staff are given information and training about autism and we are lucky to have staff prepared to go the extra mile to help so many students within the school community. We are also lucky to have access to a Speech and Language Therapist and a Dramatherapist where needed.

We have built up links with the Diamond Riding Centre who will be our neighbours when we move site. We also receive a number of requests from University Graduates doing research work into autism and with parental permission we can offer this support to them.

Another major plus point is the incredible support given by parents of students in the DFA to the school to help our students succeed in a main stream school. Their efforts sometimes go to superhero levels and the school does recognise this.

An annual event for the DFA is a trip to the coast near to the end of the summer term. It's not just laying on the beach eating fish and chips! It also helps students with visiting new places, buying things independently, travelling. Getting onto the beach may just be a new experience! The plea made usually by students is 'Can we go paint-balling...can we go to Thorpe Park?....' The answer is the same we are going somewhere low cost and south coast within no more than one and a half hours travelling away, so having in recent years visited Brighton, Eastbourne, Littlehampton and Hastings we are now looking for another location. if anyone has a suggestion for a suitable place to go which has the X-Factor we would be pleased to hear.

Mr Wardle Head of DFA

# Expressive and Performing Arts

## The Shakespeare Schools Festival 2010

I am pleased to announce that on the 13<sup>th</sup> October 2010 the Ashcroft Theatre will present Stanley Park High School's version of William Shakespeare's 'Much Ado About Nothing'. This romantic comedy consists of twenty one fine Stanley Park actors and actresses. Rehearsals are currently in full swing.

This fantastic evening will also include three other 30 minute performances from other schools.

Don't miss the chance to see these fine young stars perform in one of the finest (and largest) theatres in South London. Tickets are on sale from the Fairfield Halls Box Office : <http://www.fairfield.co.uk/> 0208 688 9291.

Hopefully see you there.

**Mr Kermally Drama**



# Business, ICT and Technology

## Year 10 School Trip to Thorpe Park

On Friday 10<sup>th</sup> September, Forty Year 10 Leisure and Tourism and Business Studies students travelled to Thorpe Park. After a long traffic filled journey we arrived at Thorpe Park. We were met at the gates by the Marketing Director and he took us to his workshop. On the way we passed queuing customers who watched us enter the park. We felt so important!

We entered the workshop and sat down at the tables provided. We were given a talk on marketing which lasted 45 minutes. He explained to us how he and his team advertise Thorpe Park and its new rides and new attractions. He showed us the progress of Thorpe Park and how they use successful businesses to advertise for them, for example Sainsbury's. It was an interesting speech and is amazing how they have become such a major tourist attraction over the last decade. When the speech was over we were given the chance for the next 5 hours to do what we wished. Immediately everybody disappeared into Thorpe Park. Everyone was so excited.



As it was a school day, Thorpe Park wasn't at its busiest so the maximum queue for a ride was 70-75 minutes. The first couple of hours went really quickly and soon it was time for lunch. Obviously we chose Burger King! After lunch we looked at the next ride and thought... NO WAY! So we took it easy for the next hour so our food had time to digest.

We were ready to roll; we didn't have long left so managed to fit in 3 of the most dizziest feeling rides possible at Thorpe Park. NEVER AGAIN am I going to eat and then do that, I have never felt so dizzy before and was glad to get off.

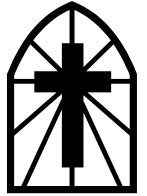
All in all it was a fantastic day out with friends and we had a great time. We would like to say thank you to Miss Kelly and Miss Jackson who organised the trip and we as a business group are looking forward to the next one.

**Jay Bradley 10MU and Clark Samuel 10DN**





# Social Sciences



## Geography, R.E., History and Sociology

### Geography

#### Is knowledgeable fun

Over the past six years the Geography Department has been the most active in promoting learning beyond the school grounds through its many and varied trips locally, nationally and even internationally. Field activities will continue to play a fundamental part in the Geography programmes at all key stages.



### R.E.

#### Pope visits Wimbledon



Last week Pope Benedict XVI (the Head of the Catholic Church) was staying in Wimbledon during his four day visit to the UK.

### History

#### GCSE History Years 10 & 11

Thanks to recent media coverage, people are aware of the seventieth anniversary of the Battle of Britain (July to September 1940) and the Blitz (Starting on 7<sup>th</sup> September 1940). These dark days in British History are remembered for the heroic actions of the few in defending the many.

When studying GCSE Modern World History, we take pride in investigating these events and understanding how through bravery, determination and technological advances we were able to stop the Nazi invasion of our shores.



### Sociology

#### Year 9 get a real taste for Culture

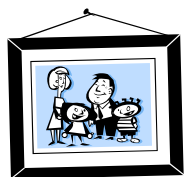
Current Year 9 students began their taster option in Sociology two weeks ago, and have been exploring the concept of culture. This week they had the opportunity to really taste some culture - by eating some traditional British dishes.

Soon they will begin a small research project and will need your help with filling out their questionnaires. So be supportive and volunteer if they ask you to.



Watch the space and look out for the reports and photographs of the following trips:

- Year 11: Wallington & Sutton
- Year 12 : Box Hill/River Mole
- Year 9 : Natural History Museum
- Year 10: London Docklands
- Post 16: New York
- Yr10: Osmington Bay
- Year 9: Emirates Stadium



Philosophical Thought: 'What came first, the chicken or the egg?'

# Post

Well life in the Post-16 Centre has got off to a great start! As the number of students tipped over the 100 mark for the first time in a long while, new courses were started, new friendships were made as we welcomed new students who had previously been at other schools and a new chapter was beginning for us all!

As we all settle down to new timetables, dress codes, volunteering opportunities and earning lots of Stanley Park Stars (the new Post-16 rewards system) we had the chance to get to know each other a lot better when we took part in a Military Assault Course.



Friday 17<sup>th</sup> of September the sun was shining and the sixth form common room was filled with a buzz of excitement as we were all raring to go on our army assault course.

After an hour coach ride we arrived in Dorking and pulled into what at first looked like an unused forest. But no, we had no time to enjoy the niceties of the setting and we had to get straight into the regime. We were forcefully herded over to get suited and booted for the course. A pair of combat overalls and a Velcro waist support belt, which we were warned was there just encase we had to be dragged out of a muddy river. So with that worrying information in the back of my mind we all set off not knowing what to expect from the day.

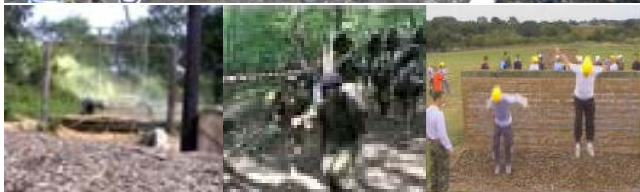
It began with our teams playing three separate group activities to test our endurance, speed and teambuilding skills. After two hours of activities everybody, tired and hard worked, settled down for lunch, but they didn't realise just what was coming next.

We played a few intense games of 'tug of war' and from there our teams were grouped in pairs to begin the actual assault course. My team the white team were paired with the yellow team as we waded through the assault course. Trudging through a murky river, climbing up muddy walls, crawling through vertical tunnels, slipping down mud slides, crawling under barbed wire, climbing up a wall of tyres, jumping over barrels was only half of the vigorous assault course. With our teams managing to finish the whole course in under half an hour it was a great triumph, (albeit with numerous bruises the next day!) and a great example of teamwork throughout it.

An absolutely magnificent day filled with lots of fun. Plus we need to mention a very special well done to the purple team who managed to win the days events.

Dolly Ogunrinde Year 12

# 16



For some people September 17<sup>th</sup> was a day of victory (purple team) and for some, a day of defeat but for everyone it was definitely a day of fun and laughter.

From carrying tyres, trudging through mud pits to shooting paintballs resulting in dirty faces, boots filled with mud and ripped overalls (yeah I ripped mine) everyone definitely had a grand time doing it.

The course consists of multiple exercises prior to the assault course itself. The relay, the tyre race, the stretcher relay and the tug of war; All four activities were meant to build teamwork in preparation for the assault course.

Personally, to me the assault course was more than what it was. The team building exercises, helping your team through and the fact that no one gets left behind. To me this is the spirit of what sixth form should be.

The moment we walked through the double doors of the sixth form centre, all of us Post 16 students became a part of one team and like in the assault course all of us must do our best to not drag the team down and in turn the team should help everyone through whether it is through climbing a 12 foot wall or asking a fellow student/teacher for help or personal matters, the team is there to help. All of us have a responsibility to do the best of our abilities to help our fellow students and teachers through the trials ahead i.e. a 12 foot wall or an exam.

To a student, a small tip from a Year 13 to a Year 12 student about a particularly tricky topic can go a long way. In the classroom, advice to tone down the chitchat and to shut up and listen when the teacher is talking, cause lets face it were not in year 11 anymore we can't afford to fail now, take it from a guy who was disappointed in his results, AS isn't easy.

To the people who didn't go, you guys missed out on one great day. If there is another one coming (hint hint) be sure to come, you wont regret it... well maybe the next day when you're all sore... and I still believe purple team was a rigged team...

Michael Taylor Year 13



Our new Year 7 students enjoyed a trip to Painshill Park on Thursday 2nd September 2010.

They spent the day exploring the woodland and beautiful parkland, as well as building camps from natural resources.

The day was a great opportunity to get to know their new tutors and classmates.

Both the students and the Year 7 tutors had a great day .



# Mathematics

## Mathematics Outreach

The Mathematics team are very proud of the role that we play in the Schools' specialism. As part of this role we provide outreach support to Stanley Park Infant School to help develop students who are identified as being able, gifted and talented in Mathematics.

Each Monday morning I work with the students to develop their Mathematical knowledge and skills. The main focus this term has been expanding students' mathematical vocabulary. The students have enjoyed working with me and shown real enthusiasm for learning, often requesting "Miss, please can you come back next week as well?"

**Mrs Shukla Mathematics**

# Dates for your diary

**Year 6 Open Evening Tuesday 5th October 6pm to 9pm**

**INSET day Wednesday 6th October School is closed to students**

**Year 9 Visit to Excel Centre, London Friday 8th October**

**Year 8 Visit to Ypres Thursday 21st to Friday 22nd October**

**Half term Monday 25th October to Friday 29th October**

**Preparation for Learning Day Monday 8th November**

**Post 16 Open Evening Thursday 18th November**

**Post 16 Parents' Evening Tuesday 30th November 3:30pm to 7pm**

Details of upcoming school events can be found on the school website, at [www.stanleyparkhigh.co.uk](http://www.stanleyparkhigh.co.uk)